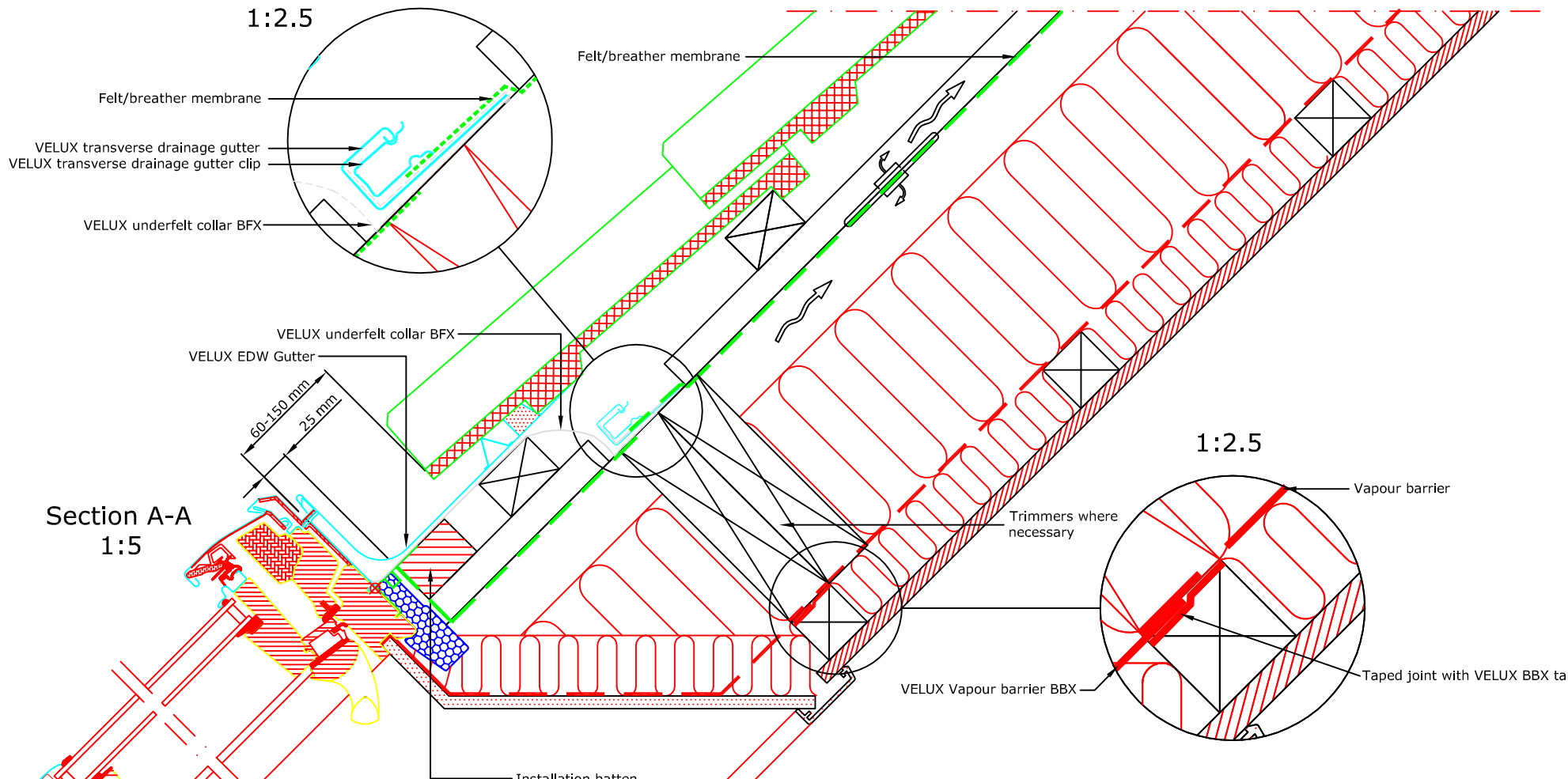
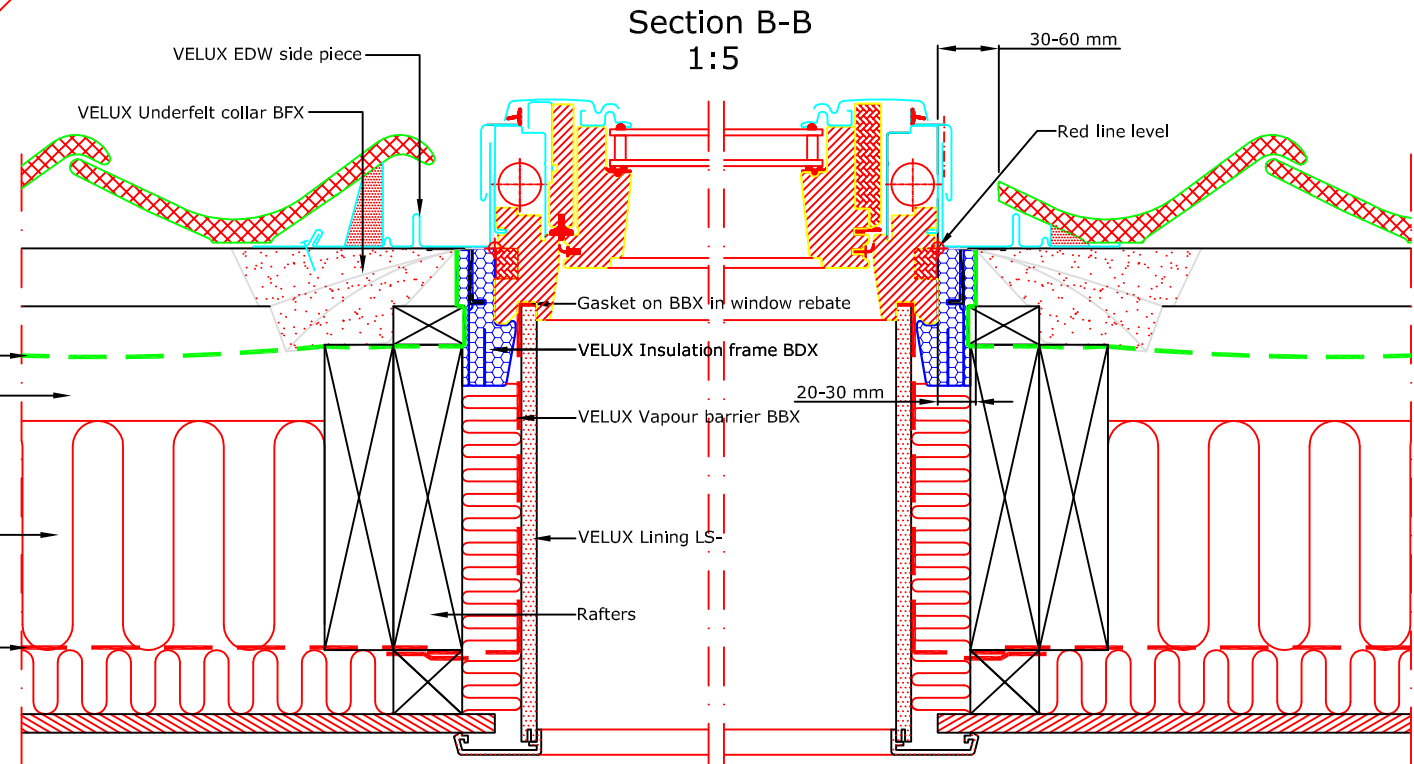
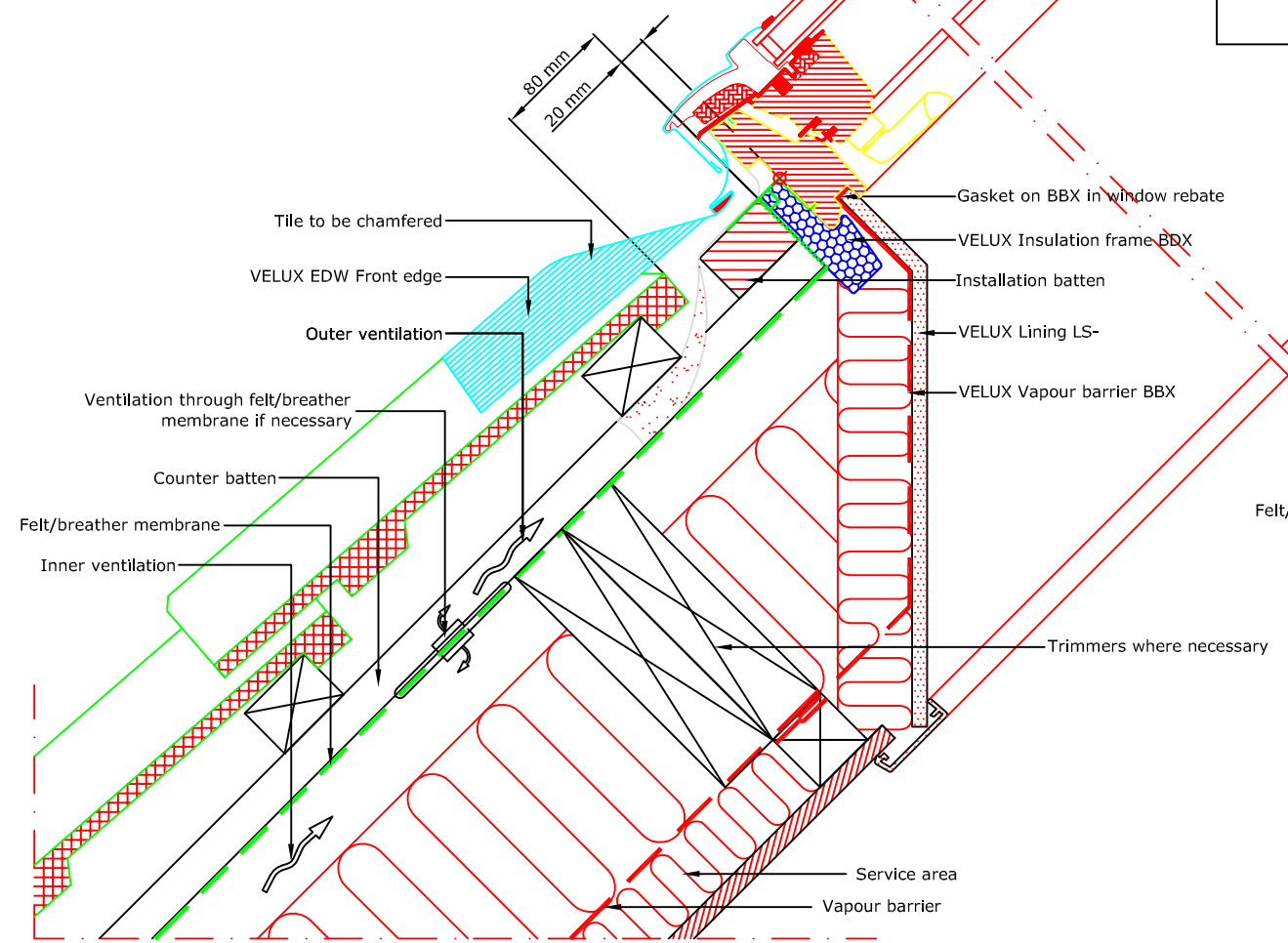


TYPICAL ELEVATION



Section A-A
1:5

- VELUX Products:
- GPL
15°-55°
* 55°-75° with special springs
 - EDW
15°-90°
 - BFX
 - BDX
 - BBX
 - LS-
- Roof covering:
- TILES
< 120 mm



Section B-B
1:5



VELUX Company Ltd
Woodside Way
Glenrothes, Fife KY7 4ND
tel: +44 (0) 1592 778 225

VELUX top-hung roof window
GPL single installation into high profiled tile
EDW flashing kit - standard install into profiled tiles up to 120mm thick
All dimensions are in millimetres where shown

NOTE! When installing VELUX roof windows, flashings and accessories, please ensure compliance with building regulations and British/European standards where necessary. This detail represents the principles of a typical installation only and the design and specification of the final detail is the responsibility of others.

Latest revision:

Date: **January 2014**
Rev no:
Rev date:
Drawn: **PJH**

File name:
GPL-EDW-0114-1012
Scale: **1:5 approx. @ A3**